

Coffee System

TANGO ACESELF, 1 group full-automatic machine with Cappuccinatore

ITEM # _____

MODEL # _____

NAME # _____

SIS # _____

AIA # _____



602558
(TANGOACESELFCLC)

Full-automatic machine, 1 group, 220x40 ml espresso cup/hr, 6,5 liter steam/coffee boiler, 1x1,7 kg and 1x1,2 kg coffee hopper, programmable water, Tango Cappuccinatore device with double function L: for hot milk and C: for foam by air injection

Short Form Specification

Item No. _____

The Tango® ACE fully takes advantage of the reliability, usability and exceptional extraction quality that has established the reputation of the TANGO® range.

In its Self version, the Tango® ACE comes with lockers for bean hoppers and waste coffee drawer, it has no steam outlet neither ground coffee box for security reason. The Tango® ACE Self version is ideal for using in all self-service areas with its self-explanatory 7" color touch screen user interface easy to use.

With the addition of the Cappuccinatore device, the Tango® ACE Self offers the choice of fresh milk-based beverages at the push of a button.

Main Features

- 1 group full-automatic machine with self service configuration.
- 6.5 liter steam/coffee boiler.
- Auto cleaning program.
- In its Self version, the Tango® ACE comes with lockers for bean hoppers and waste coffee drawer, it has no steam outlet neither ground coffee box for security reason. The Tango® ACE Self version is ideal for using in all self-service areas with its self-explanatory 7" color touch screen user interface easy to use.
- Programmable hot water.
- Tango Cappuccinatore device with double feature L: for hot milk and C: for foam by air injection.
- The Tango® ACE fully takes advantage of the reliability, usability and exceptional extraction quality that has established the reputation of the TANGO® range.
- With the Cappuccinatore device, the Tango® ACE Self offers the choice of fresh milk-based beverages at the push of a button.

Construction

- 2 coffee grinders (1 x 1,7 kg & 1 x 1,2 kg coffee hoppers).
- LCD Touchscreen.
- PID (proportional-integral-derivative) Temperature control: a precise controller algorithm system that gives consistency and accuracy to brewing temperature management system.
- Safety locks.

Optional Accessories

- Side milk refrigerator 8 liter nominal capacity for up to 4 liter milk containers PNC 871014 ☐
- Side milk refrigerator 8 liter nominal capacity for up to 4 liter milk containers with digital display PNC 871015 ☐
- TANGO hotel/breakfast service kit PNC 871022 ☐
- Coffee ground direct discharge chute PNC 871023 ☐
- Raised feet kit PNC 871041 ☐

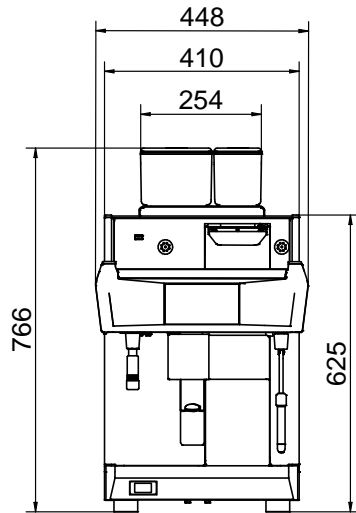
APPROVAL: _____



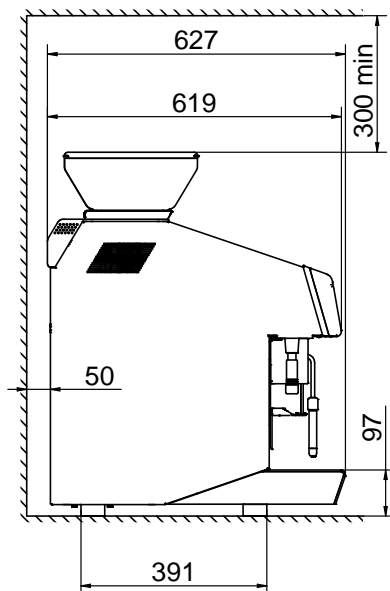
Electrolux
PROFESSIONAL

Coffee System
**TANGO ACESELF, 1 group full-
automatic machine with Cappuccinatore**

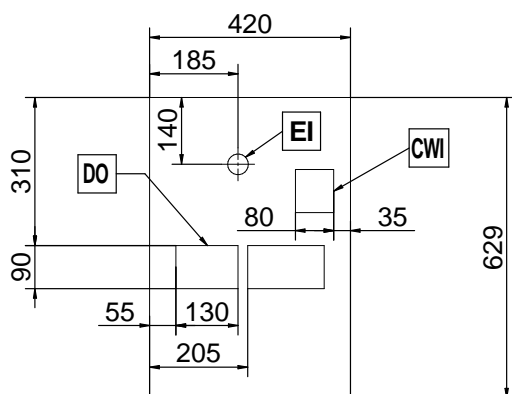
Front



Side



Top



Coffee System
TANGO ACESELF, 1 group full-automatic machine with Cappuccinatore

The company reserves the right to make modifications to the products
without prior notice. All information correct at time of printing.

2025.06.28



Electrolux
PROFESSIONAL

Coffee System
TANGO ACESELF, 1 group full-
automatic machine with Cappuccinatore

Electric

Supply voltage: 400 V/3N ph/50 Hz
Electrical power, max: 5.2 kW
Plug type: Cable without plug

Water:

Cold water temperature
(min/max): 5 / 60 °C

Key Information:

Net weight: 103 kg
Shipping volume: 0.69 m³

Sustainability

Current consumption: 7.5 Amps



Coffee System
TANGO ACESELF, 1 group full-automatic machine with Cappuccinatore

The company reserves the right to make modifications to the products without prior notice. All information correct at time of printing.

2025.06.28